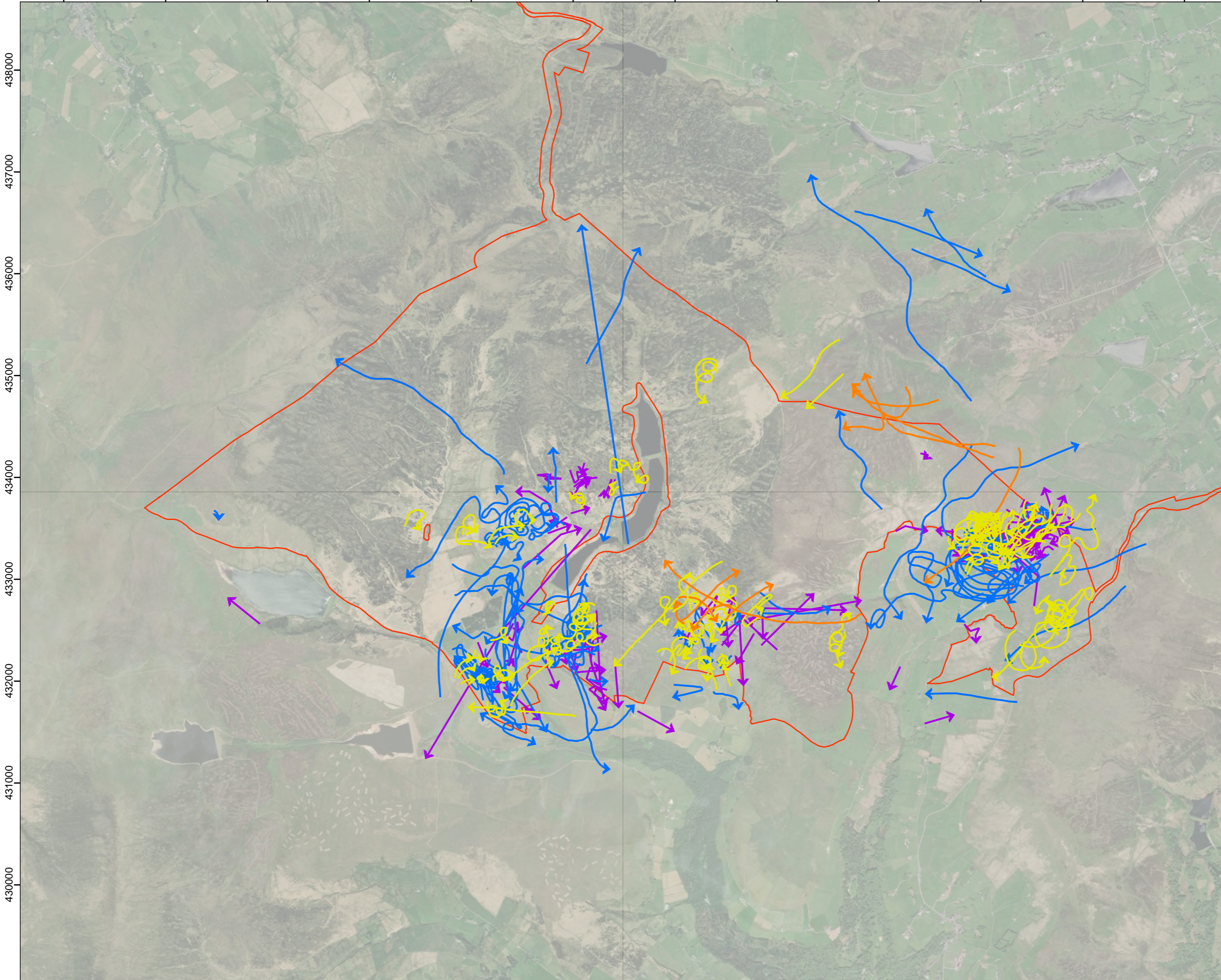


391000 392000 393000 394000 395000 396000 397000 398000 399000 400000 401000 402000



Legend:

- Site boundary

Year Flightline Recorded

- 2022
- 2023
- 2024
- 2025



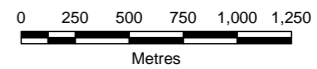
00	19/12/2025	2487562	TG	HD	TW
Rev	Date	Project Code	Drn	Chk	App

Calderdale Windfarm Ornithology




RSK
biocensus
EXPERTS IN ECOLOGY

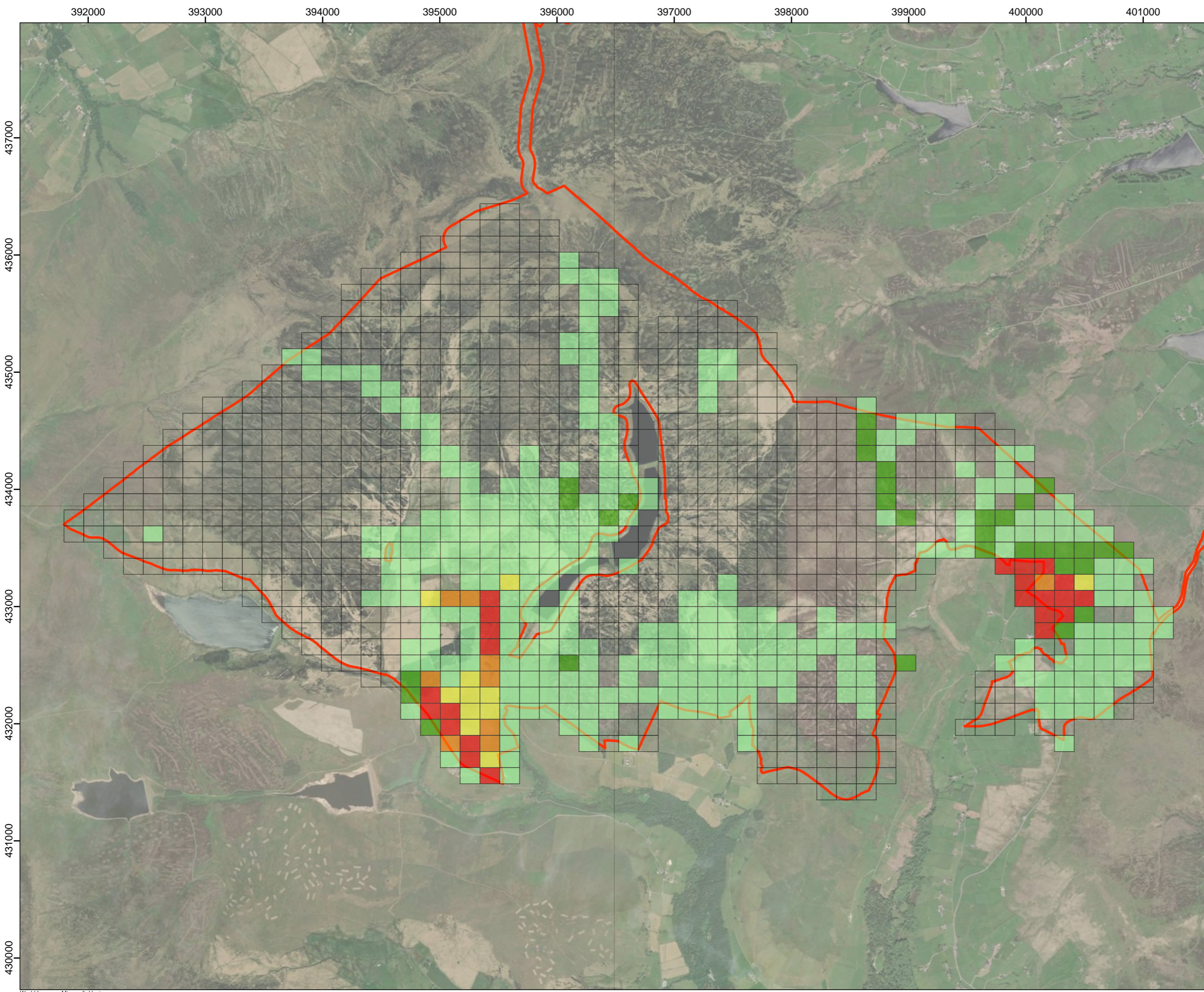
TITLE: Figure 40a:
Flight Activity for Target Species
Lapwing



Metres
SCALE: 1:35,000 @ A3



REV 00



Legend:

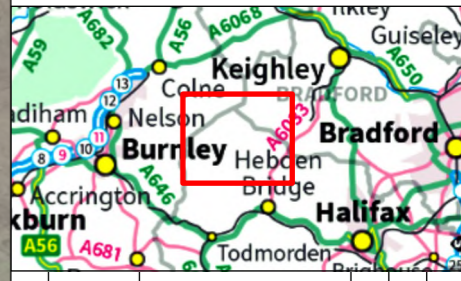
- Site boundary

**Total Flight Time (seconds)
Recorded at Target Height Bands
(10-200m)**

- < 330
- 331 - 710
- 711 - 1090
- 1091 - 1910
- 1911 - 5510
- No flightlines of target height recorded

Total flight time class widths are generated using standard deviations (SD) from the mean of the dataset.

- Light green: < 0 SD
- Green: 0 - 0.5 SD
- Yellow: 0.5 - 1.0 SD
- Orange: 1.0 - 2.0 SD
- Red: > 2.0 SD



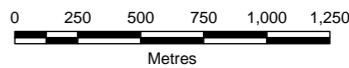
00	19/12/2025	2487562	TG	HD	TW
Rev	Date	Project Code	Drn	Chk	App

Calderdale Windfarm Ornithology

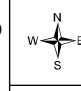


RSK
biocensus
EXPERTS IN ECOLOGY

TITLE: Figure 40b:
**Flight Activity for Priority Species
Results - Lapwing**



Metres
SCALE: 1:30,000 @ A3



REV 00