

**Legend:**

- Site boundary

**Year Flightline Recorded**

- 2022
- 2023
- 2024
- 2025



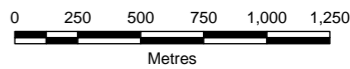
00	19/12/2025	2487562	TG	HD	TW
Rev	Date	Project Code	Drn	Chk	App

**Calderdale Windfarm Ornithology**




**RSK**  
**biocensus**  
EXPERTS IN ECOLOGY

TITLE: Figure 43a:  
**Flight Activity for Target Species  
Mallard**



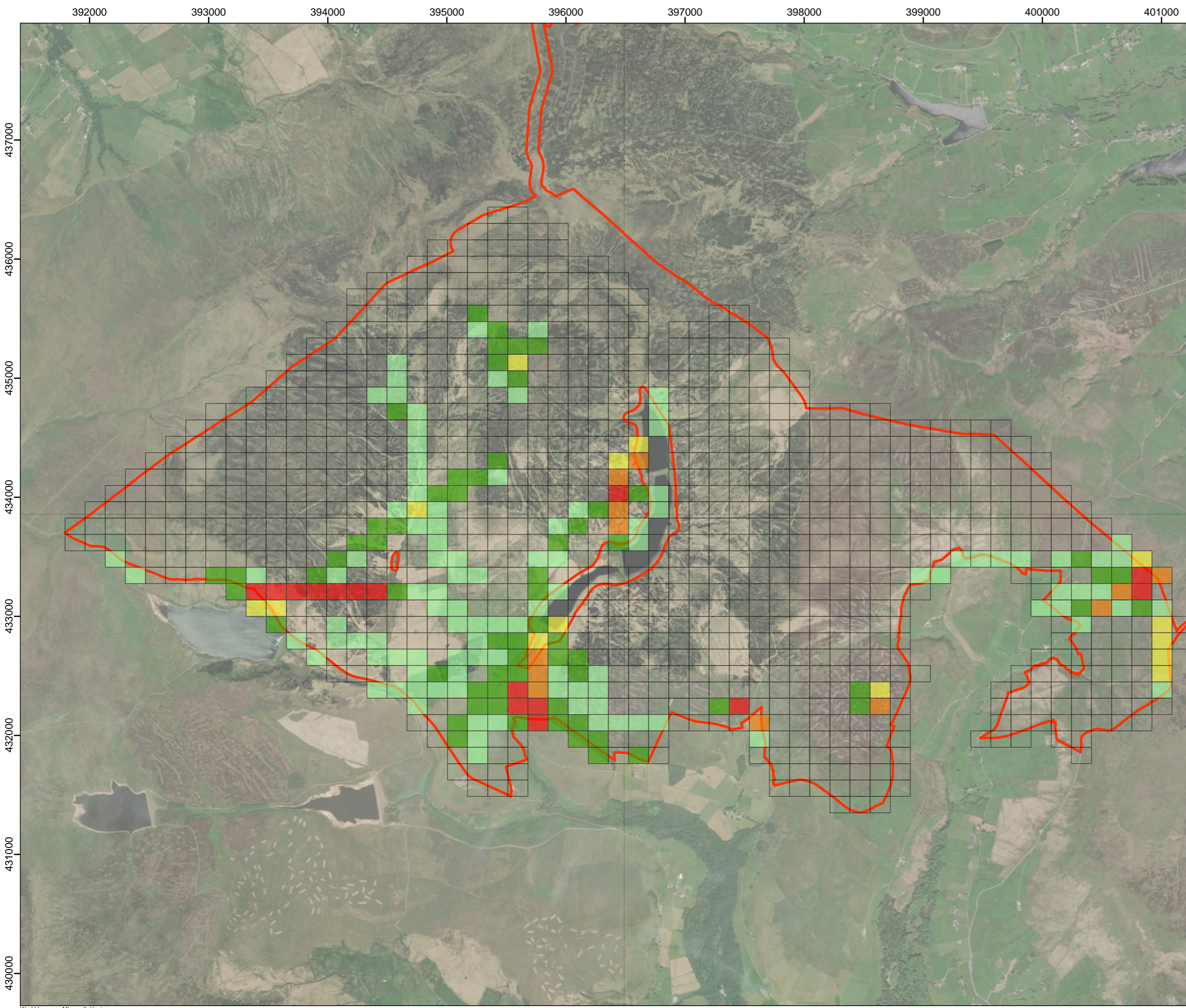
0 250 500 750 1,000 1,250  
Metres  
SCALE: 1:30,000 @ A3



N  
W E  
S

REV 00

World Imagery: Microsoft, Vantor  
OS Open Rasters: Contains OS data © Crown Copyright and database right 2022  
© Crown copyright 2025 OS AC0000868432



**Legend:**

- Site boundary

**Total Flight Time (seconds)  
Recorded at Target Height Bands  
(10-200m)**

- < 10
- 11 - 30
- 31 - 40
- 41 - 60
- 61 - 110
- No flightlines of target height recorded

Total flight time class widths are generated using standard deviations (SD) from the mean of the dataset.

- Light green: < -0.5 SD
- Green: -0.5 - 0.5 SD
- Yellow: 0.5 - 1.0 SD
- Orange: 1.0 - 2.0 SD
- Red: > 2.0 SD



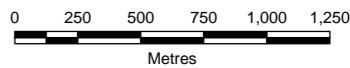
00	19/12/2025	2487562	TG	HD	TW
Rev	Date	Project Code	Drn	Chk	App

**Calderdale Windfarm Ornithology**




**RSK**  
**biocensus**  
EXPERTS IN ECOLOGY

TITLE: Figure 43b:  
**Flight Activity for Priority Species  
Results - Mallard**



Metres  
SCALE: 1:30,000 @ A3



REV 00