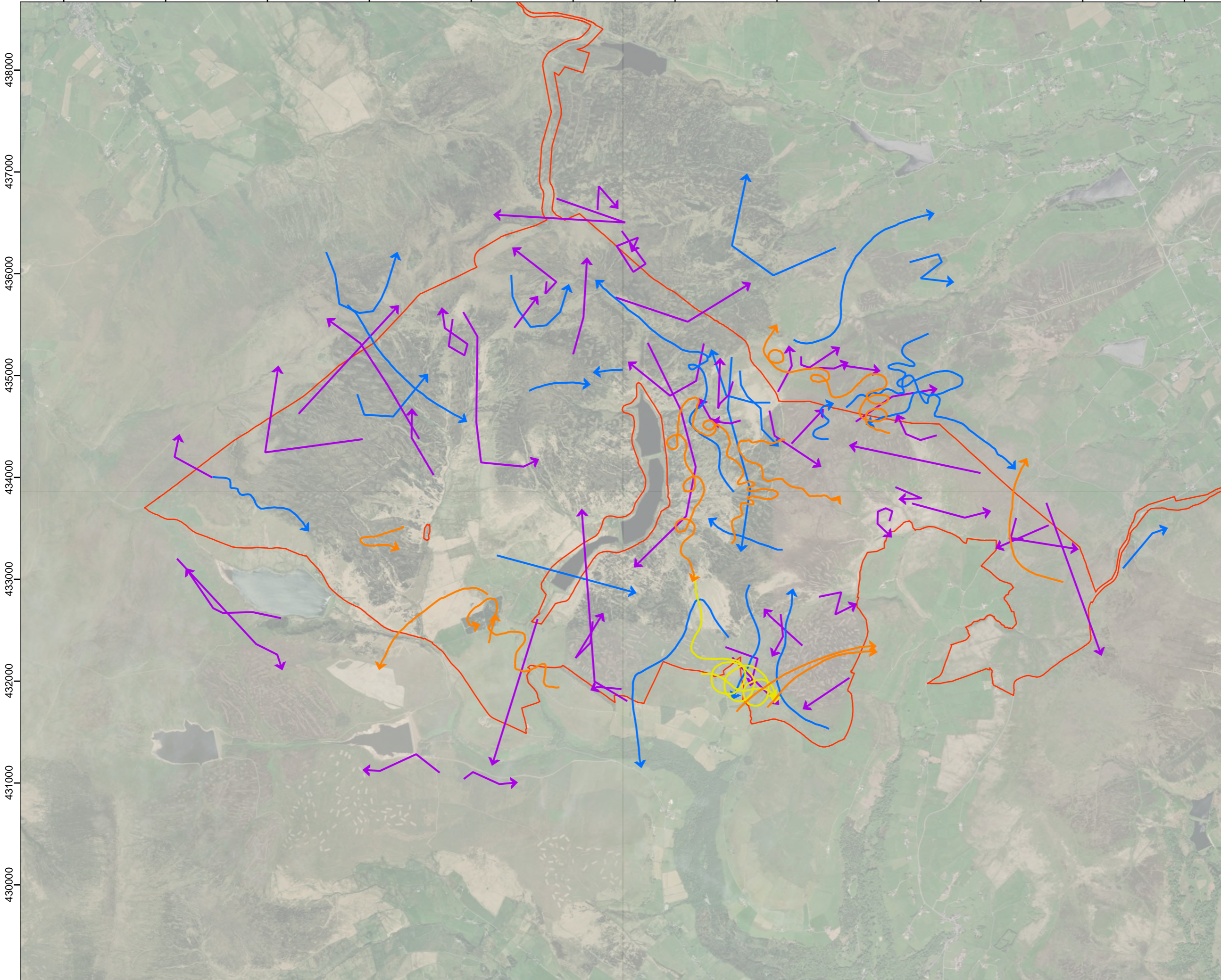


391000 392000 393000 394000 395000 396000 397000 398000 399000 400000 401000 402000

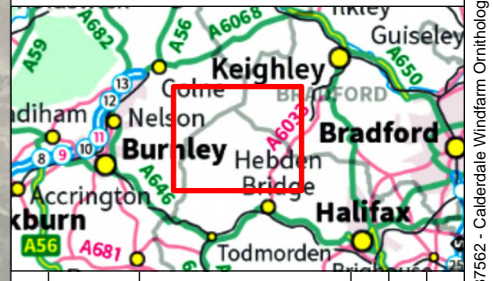


Legend:

- Site boundary

Year Flightline Recorded

- 2022
- 2023
- 2024
- 2025



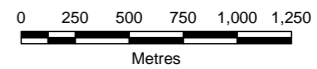
00	19/12/2025	2487562	TG	HD	TW
Rev	Date	Project Code	Drn	Chk	App

Calderdale Windfarm Ornithology




RSK
biocensus
EXPERTS IN ECOLOGY

TITLE: Figure 50a:
**Flight Activity for Target Species
Red Kite**

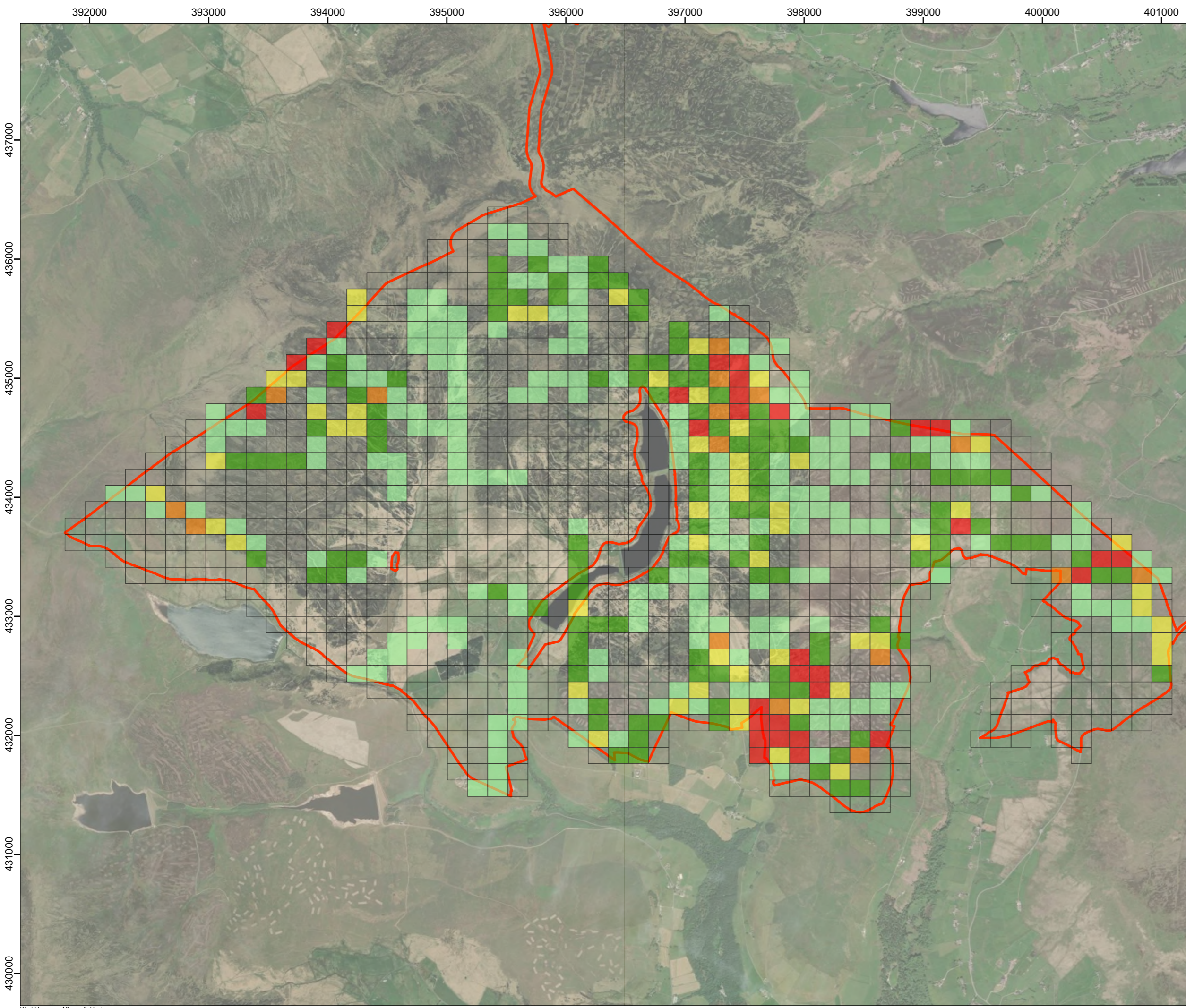


0 250 500 750 1,000 1,250
Metres
SCALE: 1:35,000 @ A3



N
W E
S

REV 00



Legend:

- Site boundary
- Total Flight Time (seconds)
Recorded at Target Height Bands
(10-200m)**
- < 10
- 11 - 20
- 21 - 30
- 31 - 40
- 41 - 90
- No flightlines of target height recorded

Total flight time class widths are generated using standard deviations (SD) from the mean of the dataset.
 Light green: < -0.5 SD
 Green: -0.5 - 0.5 SD
 Yellow: 0.5 - 1.0 SD
 Orange: 1.0 - 2.0 SD
 Red: > 2.0 SD



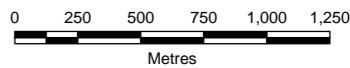
00	19/12/2025	2487562	TG	HD	TW
Rev	Date	Project Code	Drn	Chk	App

Calderdale Windfarm Ornithology




RSK
biocensus
EXPERTS IN ECOLOGY

TITLE: Figure 50b:
**Flight Activity for Priority Species
 Results - Red Kite**



Metres
SCALE: 1:30,000 @ A3



REV 00