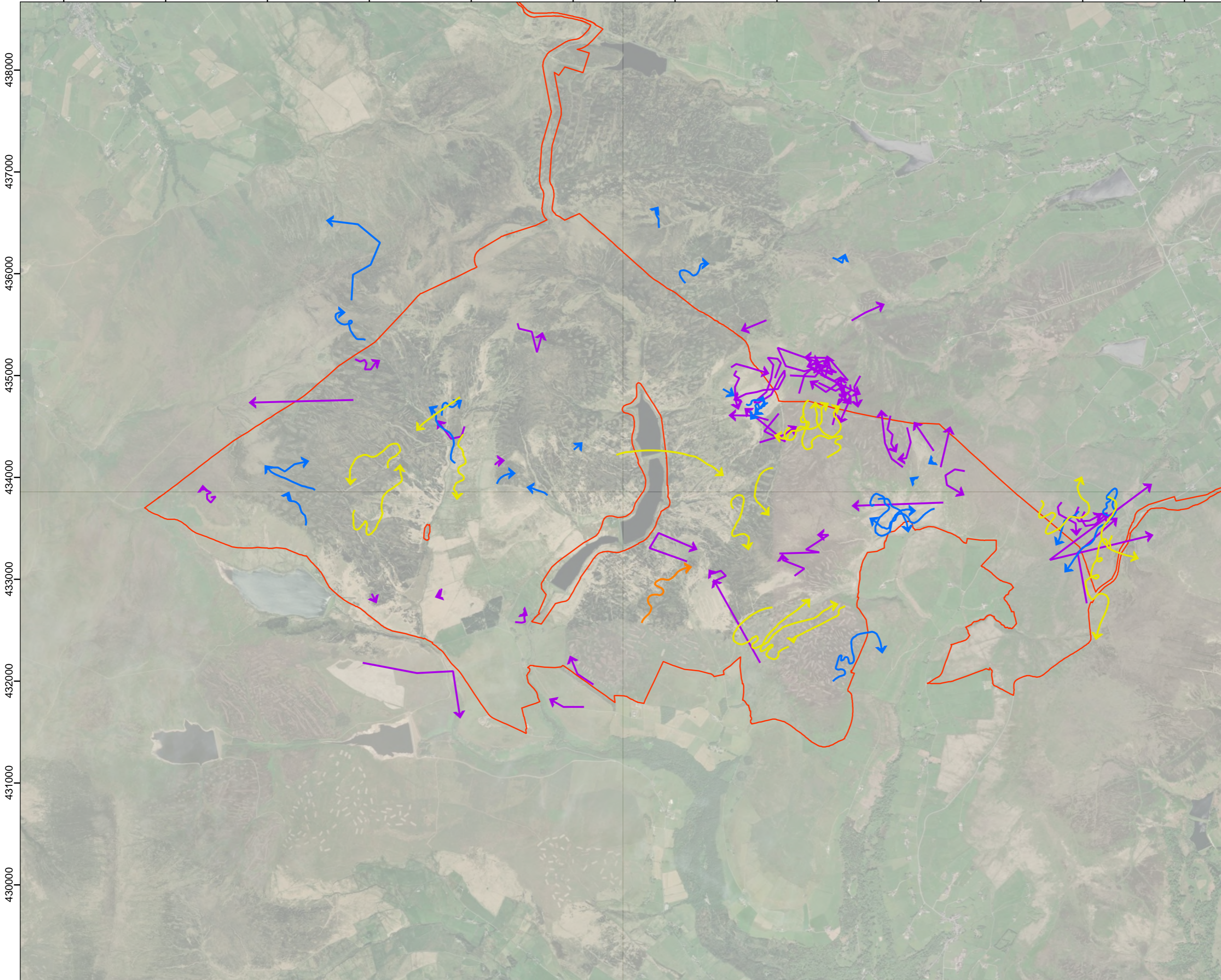


391000 392000 393000 394000 395000 396000 397000 398000 399000 400000 401000 402000

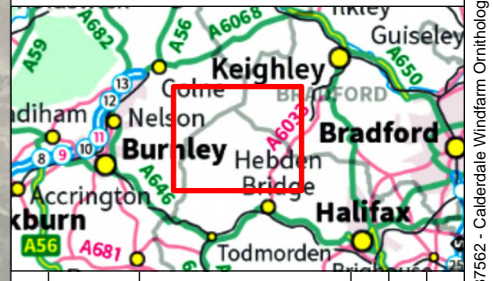


**Legend:**

- Site boundary

**Year Flightline Recorded**

- 2022
- 2023
- 2024
- 2025



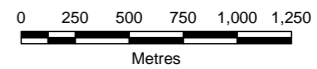
00	19/12/2025	2487562	TG	HD	TW
Rev	Date	Project Code	Drn	Chk	App

**Calderdale Windfarm Ornithology**




**RSK**  
**biocensus**  
EXPERTS IN ECOLOGY

TITLE: Figure 52a:  
Flight Activity for Target Species  
Short-eared Owl

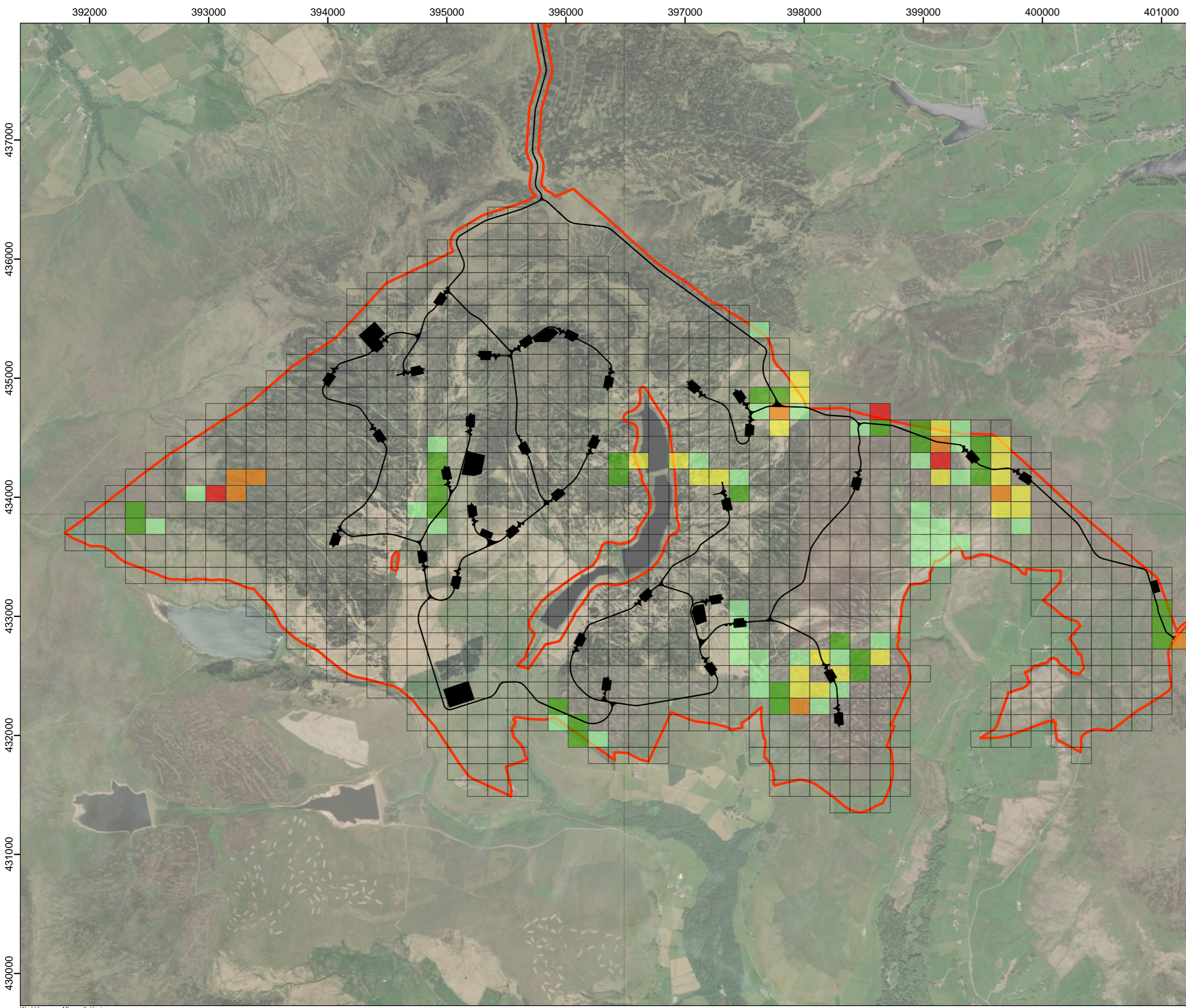


0 250 500 750 1,000 1,250  
Metres  
SCALE: 1:35,000 @ A3



N  
W E  
S

REV 00



**Legend:**

- Site boundary
- Proposed development

Total Flight Time (seconds)  
Recorded at Target Height Bands  
(10-200m)

- < 5
- 6 - 20
- 21 - 30
- 31 - 50
- 51 - 80
- No flightlines of target height recorded

Total flight time class widths are generated using standard deviations (SD) from the mean of the dataset.

- Light green: < -0.5 SD
- Green: -0.5 - 0.5 SD
- Yellow: 0.5 - 1.0 SD
- Orange: 1.0 - 2.0 SD
- Red: > 2.0 SD



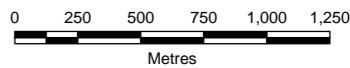
00	18/12/2025	2487562	TG	HD	TW
Rev	Date	Project Code	Drn	Chk	App

**Calderdale Windfarm Ornithology**




**RSK**  
**biocensus**  
EXPERTS IN ECOLOGY

TITLE: Figure 52b:  
Flight Activity for Priority Species  
Results - Short-eared Owl



0 250 500 750 1,000 1,250  
Metres  
SCALE: 1:30,000 @ A3



N  
W E  
S

REV 00