



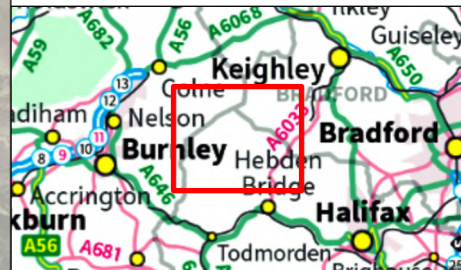
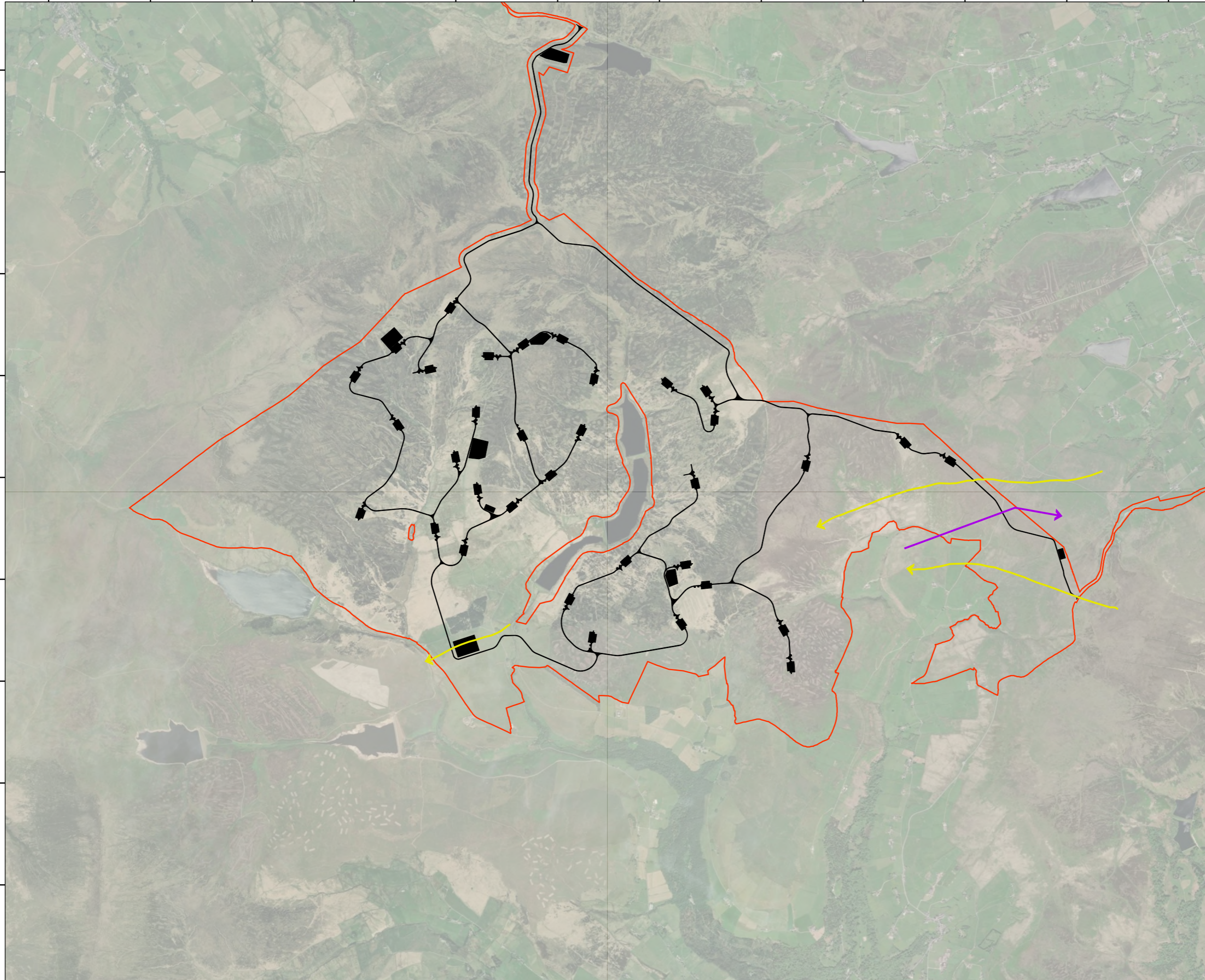


391000 392000 393000 394000 395000 396000 397000 398000 399000 400000 401000 402000

438000
437000
436000
435000
434000
433000
432000
431000
430000

Legend:

-  Site boundary
-  Proposed development
- Year Flightline Recorded**
-  2023
-  2025



00	18/12/2025	2487562	TG	HD	TW
Rev	Date	Project Code	Drn	Chk	App


Calderdale Windfarm Ornithology



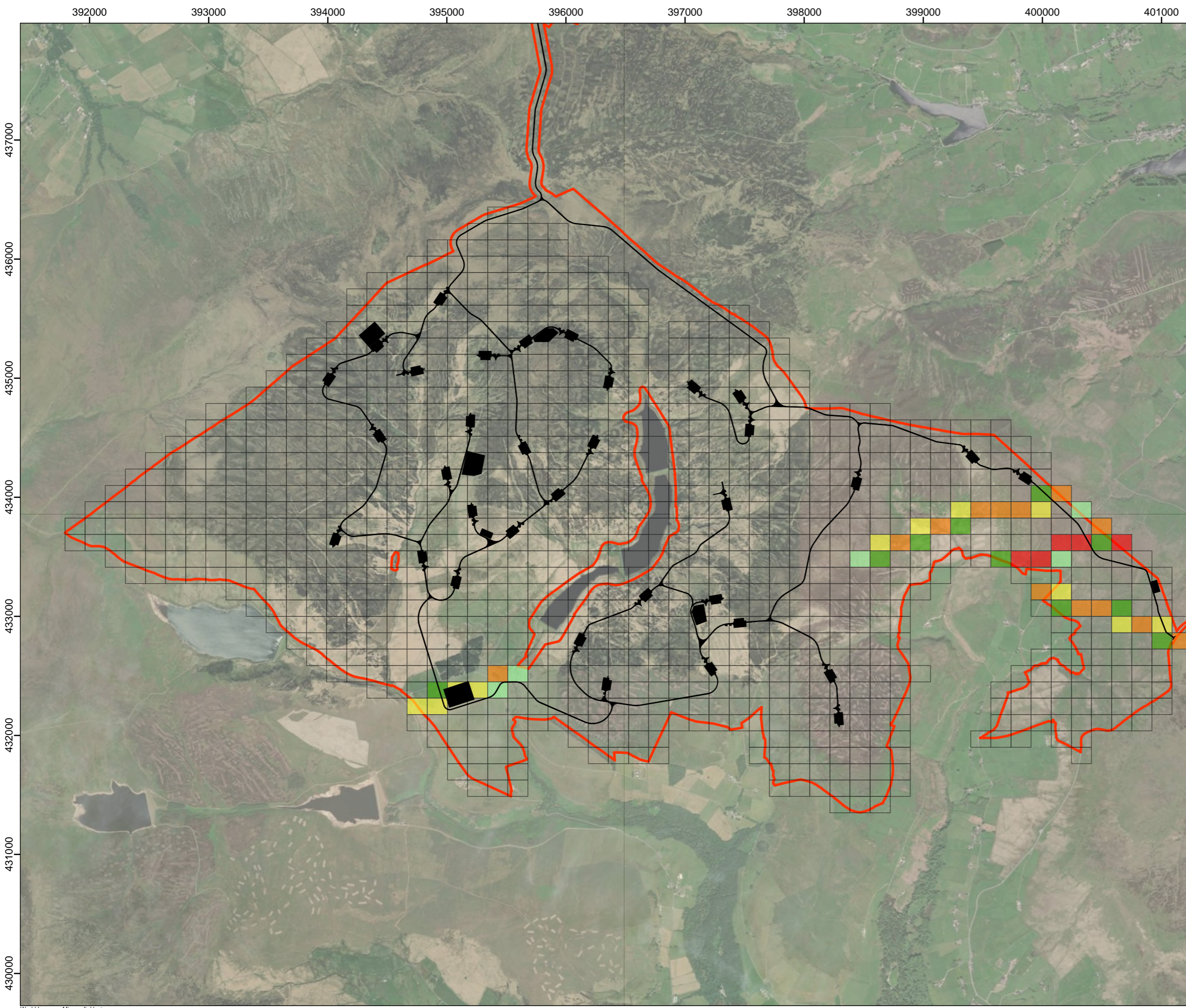
EXPERTS IN ECOLOGY

TITLE: Figure 57a:
Flight Activity for Target Species
Whooper Swan

0 250 500 750 1,000 1,250
Metres
SCALE: 1:35,000 @ A3



REV 00



Legend:

- Site boundary
- Proposed development

Total Flight Time (seconds)
Recorded at Target Height Bands
(10-200m)

- < 40
- 41 - 130
- 131 - 230
- 231 - 280
- 281 - 340
- No flightlines of target height recorded

Total flight time class widths are generated using standard deviations (SD) from the mean of the dataset.

- Light green: < -1.5 SD
- Green: -1.5 - -0.5 SD
- Yellow: -0.5 - 0.5 SD
- Orange: 0.5 - 1.0 SD
- Red: > 1.0 SD



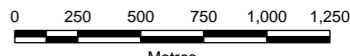
00	18/12/2025	2487562	TG	HD	TW
Rev	Date	Project Code	Drn	Chk	App

Calderdale Windfarm Ornithology




RSK
biocensus
EXPERTS IN ECOLOGY

TITLE: Figure 57b:
Flight Activity for Priority Species
Results - Whooper Swan



Metres

SCALE: 1:30,000 @ A3



REV 00